

Note: Centrifuge before opening to ensure complete recovery of vial contents.

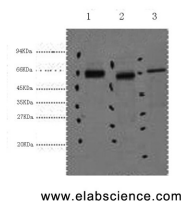
Description

Reactivity	Human, Mouse, Rat
Immunogen	Synthetic Peptide
Host	Mouse
Isotype	IgG
Clone	Clone: 2B5
Purification	Protein A purification
Conjugation	Unconjugated
Formulation	PBS with 0.02% sodium azide and 50% glycerol pH 7.4.

Applications Recommended Dilution

WB	1:1000-2000
IHC	1:100-1:300
IF	1:50-1:200

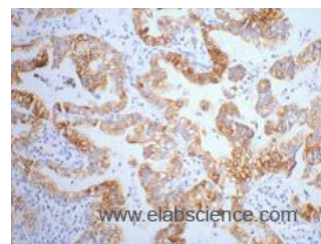
Data



www.elabscience.com

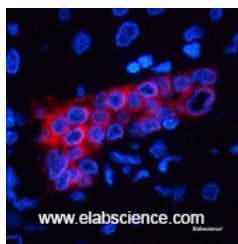
Western Blot analysis of 1) Hela, 2) Mouse kidney, 3) Mouse brain using CK-7 Monoclonal Antibody at dilution of 1:2000.

Observed Mw: 54kDa
Calculated Mw: 51kDa



www.elabscience.com

Immunohistochemistry of paraffin-embedded Human lung cancer tissue using CK-7 Monoclonal Antibody at dilution of 1:200.



www.elabscience.com

Immunofluorescence analysis of Human liver tissue using CK-7 Monoclonal Antibody at dilution of 1:200.

Preparation & Storage

Storage Store at -20°C. Avoid freeze / thaw cycles.

For Research Use Only

A Reliable Research Partner in Life Science and Medicine

Toll-free: 1-888-852-8623

Tel: 1-832-243-6086

Fax: 1-832-243-6017

Web: www.elabscience.com

Email: techsupport@elabscience.com

CK-7 Monoclonal Antibody

Catalog Number: E-AB-22017

1 Publications



Background

Blocks interferon-dependent interphase and stimulates DNA synthesis in cells. Involved in the translational regulation of the human papillomavirus type 16 E7 mRNA (HPV16 E7).

For Research Use Only

A Reliable Research Partner in Life Science and Medicine

Toll-free: 1-888-852-8623

Tel: 1-832-243-6086

Fax: 1-832-243-6017

Web: www.elabscience.com

Email: techsupport@elabscience.com