

## CK-8 Monoclonal Antibody

**Catalog No.** E-AB-22018

*Note:* Centrifuge before opening to ensure complete recovery of vial contents.

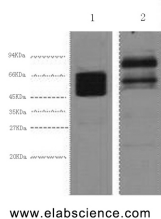
### Description

<b>Reactivity</b>	Human, Mouse, Rat
<b>Immunogen</b>	Synthetic Peptide
<b>Host</b>	Mouse
<b>Isotype</b>	IgG
<b>Clone</b>	5E9
<b>Purification</b>	Protein A purification
<b>Conjugation</b>	Unconjugated
<b>Buffer</b>	PBS with 0.02% sodium azide and 50% glycerol pH 7.4.

### Applications Recommended Dilution

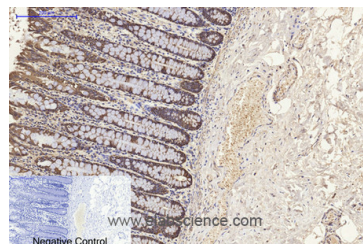
<b>WB</b>	1:2000-5000
<b>IHC</b>	1:50-1:200

### Data

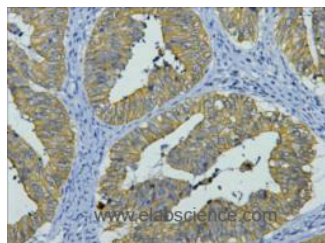


Western Blot analysis of 1) Hela, 2) Mouse brain using CK-8 Monoclonal Antibody at dilution of 1:4000.

**Observed Mw:54kDa**  
**Calculated Mw:54kDa**



Immunohistochemistry of paraffin-embedded Human colon tissue using CK-8 Monoclonal Antibody at dilution of 1:200.



Immunohistochemistry of paraffin-embedded Human colon cancer tissue using CK-8 Monoclonal Antibody at dilution of 1:200.

### For Research Use Only

## Preparation & Storage

**Storage**                      Store at -20°C. Avoid freeze / thaw cycles.

## Background

Together with KRT19, helps to link the contractile apparatus to dystrophin at the costameres of striated muscle.