

CD21 Monoclonal Antibody

Catalog No. E-AB-22023

Note: Centrifuge before opening to ensure complete recovery of vial contents.

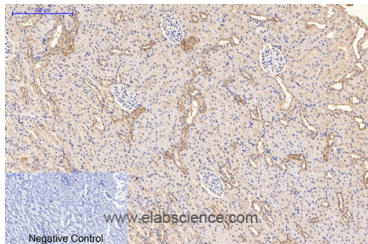
Description

Reactivity	Human,Mouse,Rat
Immunogen	Synthetic Peptide
Host	Mouse
Isotype	IgG
Purification	Protein A purification
Conjugation	Unconjugated
Buffer	PBS with 0.02% sodium azide and 50% glycerol pH 7.4.

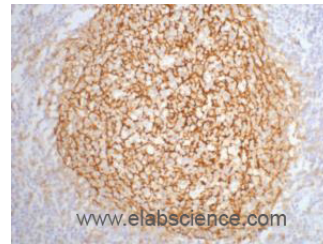
Applications Recommended Dilution

IHC	1:100-1:300
IF	1:50-200

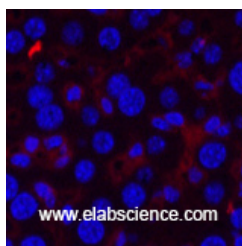
Data



Immunohistochemistry of paraffin-embedded Rat kidney tissue using CD21 Monoclonal Antibody at dilution of 1:200.



Immunohistochemistry of paraffin-embedded Human tonsil tissue using CD21 Monoclonal Antibody at dilution of 1:200.



Immunofluorescence analysis of Mouse liver tissue using CD21 Monoclonal Antibody at dilution of 1:200.

Preparation & Storage

Storage Store at -20°C. Avoid freeze / thaw cycles.

Background

For Research Use Only

This gene encodes a membrane protein, which functions as a receptor for Epstein-Barr virus (EBV) binding on B and T lymphocytes. Genetic variations in this gene are associated with susceptibility to systemic lupus erythematosus type 9 (SLEB9). Alternatively spliced transcript variants encoding different isoforms have been found for this gene.