

## CD66e Monoclonal Antibody

**Catalog No.** E-AB-22024

*Note:* Centrifuge before opening to ensure complete recovery of vial contents.

### Description

|                     |  |
|---------------------|--|
| <b>Reactivity</b>   | Human  |
| <b>Immunogen</b>    | Synthetic Peptide                                    |
| <b>Host</b>         | Mouse  |
| <b>Isotype</b>      | IgG  |
| <b>Clone</b>        | Clone:1A2  |
| <b>Purification</b> | Protein A purification                               |
| <b>Conjugation</b>  | Unconjugated   |
| <b>Buffer</b>       | PBS with 0.02% sodium azide and 50% glycerol pH 7.4. |

### Applications

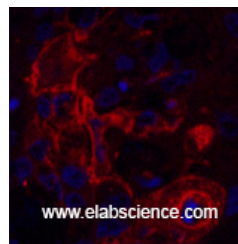
### Recommended Dilution

|            |             |
|------------|-------------|
| <b>IHC</b> | 1:100-1:300 |
| <b>IF</b>  | 1:50-200    |

### Data



Immunohistochemistry of paraffin-embedded Human colon cancer tissue using CD66e Monoclonal Antibody at dilution of 1:200.



Immunofluorescence analysis of Human lung cancer tissue using CD66e Monoclonal Antibody at dilution of 1:200.

### Preparation & Storage

**Storage** Store at -20°C. Avoid freeze / thaw cycles.

### Background

Carcinoembryonic antigen-related cell adhesion molecule 5 (CEACAM5) also known as CD66e (Cluster of Differentiation 66e), is a human gene. Members of the CEACAM subfamily, including CEACAM5, belong to the CEA gene family. CD66E is a well known tumor marker and a heavily glycosylated GPI-linked cell surface molecule.

### For Research Use Only