

AQP4 Monoclonal Antibody

Catalog Number:E-AB-22025

Note: Centrifuge before opening to ensure complete recovery of vial contents.

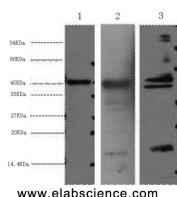
Description

Reactivity	Human,Mouse,Rat
Immunogen	Synthetic Peptide
Host	Mouse
Isotype	IgG
Clone	Clone:1A6
Purification	Protein A purification
Conjugation	Unconjugated
Formulation	PBS with 0.02% sodium azide and 50% glycerol pH 7.4.

Applications Recommended Dilution

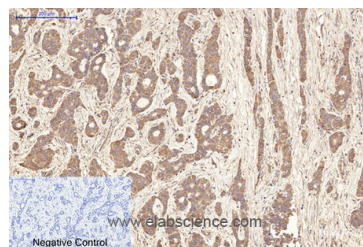
WB	1:500-1:2000
IHC	1:50-300
IF	1:100-200

Data

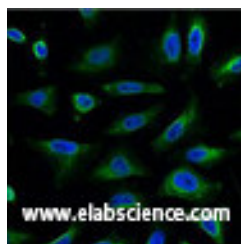


Western Blot analysis of 1) Hela, 2) Mouse heart, 3) Rat heart using AQP4 Monoclonal Antibody at dilution of 1:2000.

Observed Mw:48kDa
Calculated Mw:35kDa



Immunohistochemistry of paraffin-embedded Human liver cancer tissue using AQP4 Monoclonal Antibody at dilution of 1:200.



Immunofluorescence analysis of HeLa tissue using AQP4 Monoclonal Antibody at dilution of 1:100.

Preparation & Storage

Storage Store at -20°C. Avoid freeze / thaw cycles.

Background

For Research Use Only

A Reliable Research Partner in Life Science and Medicine

Toll-free: 1-888-852-8623

Web: www.elabscience.com

Tel: 1-832-243-6086

Email: techsupport@elabscience.com

Fax: 1-832-243-6017

AQP4 Monoclonal Antibody

Catalog Number: E-AB-22025



This gene encodes a member of the aquaporin family of intrinsic membrane proteins that function as water-selective channels in the plasma membranes of many cells. The encoded protein is the predominant aquaporin found in brain. Two alternatively spliced transcript variants encoding distinct isoforms have been found for this gene.

For Research Use Only

A Reliable Research Partner in Life Science and Medicine

Toll-free: 1-888-852-8623

Web: www.elabscience.com

Tel: 1-832-243-6086

Email: techsupport@elabscience.com

Fax: 1-832-243-6017