

KIF7 Monoclonal Antibody

Catalog No. E-AB-22026

Note: Centrifuge before opening to ensure complete recovery of vial contents.

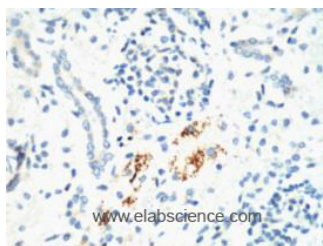
Description

Reactivity	Human,Mouse,Rat
Immunogen	Synthetic Peptide
Host	Mouse
Isotype	IgG
Purification	Protein A purification
Conjugation	Unconjugated
Buffer	PBS with 0.02% sodium azide and 50% glycerol pH 7.4.

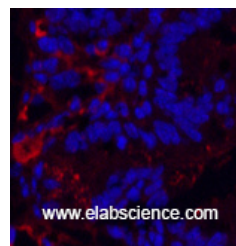
Applications Recommended Dilution

IHC	1:100-1:300
IF	1:50-200

Data



Immunohistochemistry of paraffin-embedded Mouse kidney tissue using KIF7 Monoclonal Antibody at dilution of 1:200.



Immunofluorescence analysis of Mouse colon tissue using KIF7 Monoclonal Antibody at dilution of 1:200.

Preparation & Storage

Storage Store at -20°C. Avoid freeze / thaw cycles.

Background

This gene encodes a cilia-associated protein belonging to the kinesin family. This protein plays a role in the sonic hedgehog (SHH) signaling pathway through the regulation of GLI transcription factors. It functions as a negative regulator of the SHH pathway by preventing inappropriate activation of GLI2 in the absence of ligand, and as a positive regulator by preventing the processing of GLI3 into its repressor form. Mutations in this gene have been associated with various ciliopathies. KIF7 (Kinesin Family Member 7) is a Protein Coding gene. Diseases associated with KIF7 include Acrocallosal Syndrome and Hydrolethalus Syndrome 2. Among its related pathways are Signaling by Hedgehog and Signaling by GPCR. GO annotations related to this gene include ATPase activity and microtubule motor activity. An important paralog of this gene is KIF27.

For Research Use Only