

ENO2 Monoclonal Antibody

Catalog No. E-AB-22029

Note: Centrifuge before opening to ensure complete recovery of vial contents.

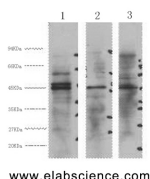
Description

Reactivity	Human,Mouse,Rat
Immunogen	Synthetic Peptide
Host	Mouse
Isotype	IgG
Purification	Protein A purification
Conjugation	Unconjugated
Buffer	PBS with 0.02% sodium azide and 50% glycerol pH 7.4.

Applications Recommended Dilution

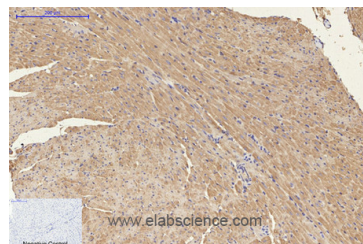
WB	1:500-1:3000
IHC	1:100-1:300
IF	1:100-1:300

Data

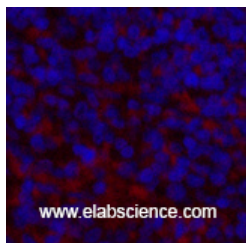


Western Blot analysis of 1) HeLa, 2) Jurkat, 3) 293T cells using ENO2 Monoclonal Antibody at dilution of 1:3000.

Observed Mw:47kDa
Calculated Mw:47kDa



Immunohistochemistry of paraffin-embedded Mouse heart tissue using ENO2 Monoclonal Antibody at dilution of 1:200.



Immunofluorescence analysis of Mouse spleen tissue using ENO2 Monoclonal Antibody at dilution of 1:200.

For Research Use Only

Preparation & Storage

Storage Store at -20°C. Avoid freeze / thaw cycles.

Background

Has neurotrophic and neuroprotective properties on a broad spectrum of central nervous system (CNS) neurons. Binds, in a calcium-dependent manner, to cultured neocortical neurons and promotes cell survival