

MAP2 Monoclonal Antibody

Catalog No. E-AB-22030

Note: Centrifuge before opening to ensure complete recovery of vial contents.

Description

Reactivity	Human,Mouse,Rat
Immunogen	Synthetic Peptide
Host	Mouse
Isotype	IgG
Purification	Protein A purification
Conjugation	Unconjugated
Buffer	PBS with 0.02% sodium azide and 50% glycerol pH 7.4.

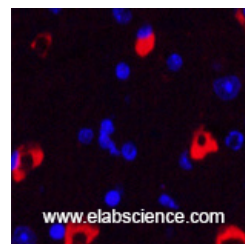
Applications Recommended Dilution

IHC	1:100-1:300
IF	1:50-200

Data



Immunohistochemistry of paraffin-embedded Human brain tissue using MAP2 Monoclonal Antibody at dilution of 1:200.



Immunofluorescence analysis of Mouse brain tissue using MAP2 Monoclonal Antibody at dilution of 1:200.

Preparation & Storage

Storage Store at -20°C. Avoid freeze / thaw cycles.

Background

This gene encodes a protein that belongs to the microtubule-associated protein family. The proteins of this family are thought to be involved in microtubule assembly, which is an essential step in neurogenesis. The products of similar genes in rat and mouse are neuron-specific cytoskeletal proteins that are enriched in dendrites, implicating a role in determining and stabilizing dendritic shape during neuron development. A number of alternatively spliced variants encoding distinct isoforms have been described.

For Research Use Only