

ABCB5 Monoclonal Antibody

Catalog No. E-AB-22032

Note: Centrifuge before opening to ensure complete recovery of vial contents.

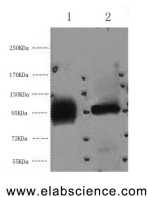
Description

Reactivity	Human
Immunogen	Synthetic Peptide
Host	Mouse
Isotype	IgG
Purification	Protein A purification
Conjugation	Unconjugated
Buffer	PBS with 0.02% sodium azide and 50% glycerol pH 7.4.

Applications Recommended Dilution

WB	1:500-1:3000
IHC	1:50-1:300
IF	1:100-1:300

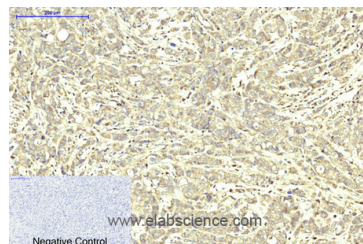
Data



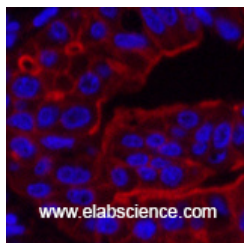
www.elabscience.com

Western Blot analysis of 1) HeLa, 2) 293T cells using ABCB5 Monoclonal Antibody at dilution of 1:2000.

Observed Mw:90kDa
Calculated Mw:90kDa



Immunohistochemistry of paraffin-embedded Human breast cancer tissue using ABCB5 Monoclonal Antibody at dilution of 1:200.



www.elabscience.com

Immunofluorescence analysis of Human liver cancer tissue using ABCB5 Monoclonal Antibody at dilution of 1:200.

Preparation & Storage

For Research Use Only

Storage Store at -20°C. Avoid freeze / thaw cycles.

Background

ABCB5 belongs to the ATP-binding cassette (ABC) transporter superfamily of integral membrane proteins. These proteins participate in ATP-dependent transmembrane transport of structurally diverse molecules ranging from small ions, sugars, and peptides to more complex organic molecules.