

# CASP9 Monoclonal Antibody

Catalog Number:E-AB-22035

1 Publications



**Note:** Centrifuge before opening to ensure complete recovery of vial contents.

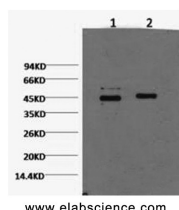
## Description

<b>Reactivity</b>	Human
<b>Immunogen</b>	Synthetic Peptide
<b>Host</b>	Mouse
<b>Isotype</b>	IgG
<b>Clone</b>	Clone:3I3
<b>Purification</b>	Protein A purification
<b>Conjugation</b>	Unconjugated
<b>Formulation</b>	PBS with 0.02% sodium azide and 50% glycerol pH 7.4.

## Applications Recommended Dilution

<b>WB</b>	1:500-1:2000
<b>IHC</b>	1:50-300
<b>IF</b>	1:50-1:200
<b>IP</b>	1:100-1:300

## Data



www.elabscience.com

Western Blot analysis of HeLa cells using CASP9 Monoclonal Antibody at dilution of 1) 1:2000 2) 1:5000.

**Observed Mw:47-51kDa**

**Calculated Mw:46kDa**

## Preparation & Storage

**Storage** Store at -20°C. Avoid freeze / thaw cycles.

## Background

Involved in the activation cascade of caspases responsible for apoptosis execution. Binding of caspase-9 to Apaf-1 leads to activation of the protease which then cleaves and activates caspase-3. Proteolytically cleaves poly(ADP-ribose) polymerase (PARP). Isoform 2 lacks activity is a dominant-negative inhibitor of caspase-9.

## For Research Use Only

A Reliable Research Partner in Life Science and Medicine

Toll-free: 1-888-852-8623

Web: [www.elabscience.com](http://www.elabscience.com)

Tel: 1-832-243-6086

Email: [techsupport@elabscience.com](mailto:techsupport@elabscience.com)

Fax: 1-832-243-6017