

IDE Monoclonal Antibody

Catalog No. E-AB-22041

Note: Centrifuge before opening to ensure complete recovery of vial contents.

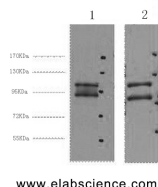
Description

Reactivity	Human
Immunogen	Synthetic Peptide
Host	Mouse
Isotype	IgG
Clone	6E3
Purification	Protein A purification
Conjugation	Unconjugated
Buffer	PBS with 0.02% sodium azide and 50% glycerol pH 7.4.

Applications Recommended Dilution

WB	1:500-1:2000
IHC	1:50-300
IF	1:100-1:300

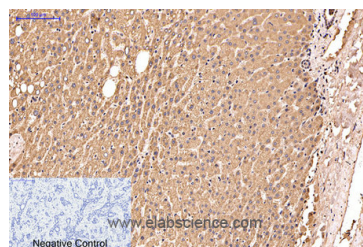
Data



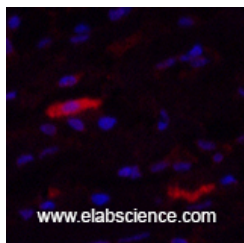
www.elabscience.com

Western Blot analysis of 1) HeLa, 2) HepG2 cells using IDE Monoclonal Antibody at dilution of 1:2000.

Observed Mw:118kDa



Immunohistochemistry of paraffin-embedded Human liver cancer tissue using IDE Monoclonal Antibody at dilution of 1:200.



www.elabscience.com

Immunofluorescence analysis of Human breast tissue using IDE Monoclonal Antibody at dilution of 1:200.

Preparation & Storage

For Research Use Only

Toll-free: 1-888-852-8623

Web: www.elabscience.com

Tel: 1-832-243-6086

Email: techsupport@elabscience.com

Fax: 1-832-243-6017

Storage Store at -20°C. Avoid freeze / thaw cycles.

Background

This gene encodes a zinc metallopeptidase that degrades intracellular insulin, and thereby terminates insulin's activity, as well as participating in intercellular peptide signalling by degrading diverse peptides such as glucagon, amylin, bradykinin, and kallidin. The preferential affinity of this enzyme for insulin results in insulin-mediated inhibition of the degradation of other peptides such as beta-amyloid. Deficiencies in this protein's function are associated with Alzheimer's disease and type 2 diabetes mellitus but mutations in this gene have not been shown to be causative for these diseases. This protein localizes primarily to the cytoplasm but in some cell types localizes to the extracellular space, cell membrane, peroxisome, and mitochondrion. Alternative splicing results in multiple transcript variants encoding distinct isoforms. Additional transcript variants have been described but have not been experimentally verified.