

Oct-1/2 Monoclonal Antibody

Catalog Number:E-AB-22047

Note: Centrifuge before opening to ensure complete recovery of vial contents.

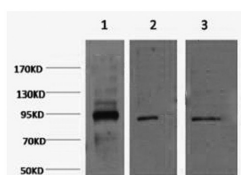
Description

Reactivity	Human
Immunogen	Synthetic Peptide
Host	Mouse
Isotype	IgG
Clone	Clone:5G3
Purification	Protein A purification
Conjugation	Unconjugated
Formulation	PBS with 0.02% sodium azide and 50% glycerol pH 7.4.

Applications Recommended Dilution

WB	1:500-2000
IHC	1:50-300
IF	1:100-1:300

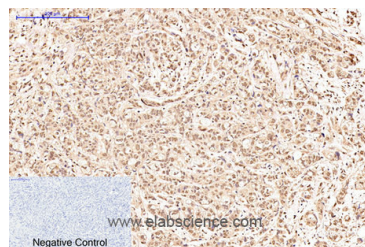
Data



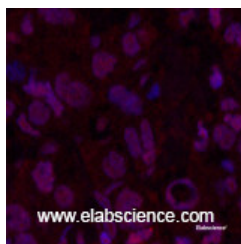
www.elabscience.com

Western Blot analysis of 1) HeLa, 2) Jurkat, 3) HepG2 cells using Oct-1/2 Monoclonal Antibody at dilution of 1:2000.

Observed Mw:89kDa
Calculated Mw:76kDa



Immunohistochemistry of paraffin-embedded Human breast cancer tissue using Oct-1/2 Monoclonal Antibody at dilution of 1:200.



Immunofluorescence analysis of Human breast cancer tissue using Oct-1/2 Monoclonal Antibody at dilution of 1:200.

Preparation & Storage

Storage Store at -20°C. Avoid freeze / thaw cycles.

For Research Use Only

A Reliable Research Partner in Life Science and Medicine

Toll-free: 1-888-852-8623

Web: www.elabscience.com

Tel: 1-832-243-6086

Email: techsupport@elabscience.com

Fax: 1-832-243-6017

Oct-1/2 Monoclonal Antibody

Catalog Number:E-AB-22047



Background

The OCT1 transcription factor was among the first identified members of the POU transcription factor family. Members of this family contain the POU domain, a 160-amino acid region necessary for DNA binding to the octameric sequence ATGCAAAT.

For Research Use Only

A Reliable Research Partner in Life Science and Medicine

Toll-free: 1-888-852-8623

Web: www.elabscience.com

Tel: 1-832-243-6086

Email: techsupport@elabscience.com

Fax: 1-832-243-6017