

# CD16 Monoclonal Antibody

Catalog Number:E-AB-22048



**Note:** Centrifuge before opening to ensure complete recovery of vial contents.

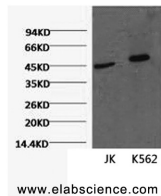
## Description

<b>Reactivity</b>	Human
<b>Immunogen</b>	Synthetic Peptide
<b>Host</b>	Mouse
<b>Isotype</b>	IgG
<b>Clone</b>	Clone:2B1
<b>Purification</b>	Protein A purification
<b>Conjugation</b>	Unconjugated
<b>Formulation</b>	PBS with 0.02% sodium azide and 50% glycerol pH 7.4.

## Applications Recommended Dilution

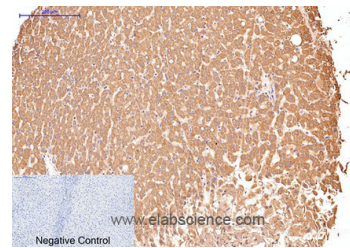
<b>WB</b>	1:500-1:2000
<b>IHC</b>	1:50-300

## Data



Western Blot analysis of 1) Jurkat, 2) K562 cells using CD16 Monoclonal Antibody at dilution of 1:2000.

**Observed Mw:45kDa**  
**Calculated Mw:28kDa**



Immunohistochemistry of paraffin-embedded Human liver tissue using CD16 Monoclonal Antibody at dilution of 1:200.

## Preparation & Storage

**Storage** Store at -20°C. Avoid freeze / thaw cycles.

## Background

This gene encodes a receptor for the Fc portion of immunoglobulin G, and it is involved in the removal of antigen-antibody complexes from the circulation, as well as other other antibody-dependent responses. This gene (FCGR3A) is highly similar to another nearby gene (FCGR3B) located on chromosome 1. The receptor encoded by this gene is expressed on natural killer (NK) cells as an integral membrane glycoprotein anchored through a transmembrane peptide, whereas FCGR3B is expressed on polymorphonuclear neutrophils (PMN) where the receptor is anchored through a phosphatidylinositol (PI) linkage.

## For Research Use Only

A Reliable Research Partner in Life Science and Medicine

Toll-free: 1-888-852-8623

Web: [www.elabscience.com](http://www.elabscience.com)

Tel: 1-832-243-6086

Email: [techsupport@elabscience.com](mailto:techsupport@elabscience.com)

Fax: 1-832-243-6017