

CK-18 Monoclonal Antibody

Catalog No. E-AB-22053

Note: Centrifuge before opening to ensure complete recovery of vial contents.

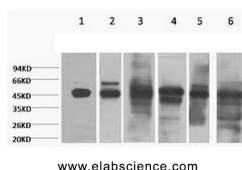
Description

Reactivity	Human,Mouse,Rat
Immunogen	Recombinant Protein
Host	Mouse
Isotype	IgG
Clone	Clone:6B3
Purification	Protein A purification
Conjugation	Unconjugated
Buffer	PBS with 0.02% sodium azide and 50% glycerol pH 7.4.

Applications Recommended Dilution

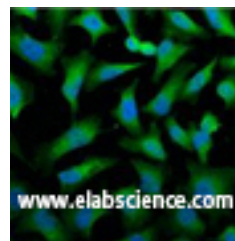
WB	1:1000-3000
IF	1:100-200

Data



Western Blot analysis of 1) HepG2, 2) HeLa, 3) Mouse liver, 4) C2C12, 5) Rat heart, 6) Mouse skeletal, muscle using CK-18 Monoclonal Antibody at dilution of 1:2000.

Observed Mw:46kDa
Calculated Mw:48kDa



Immunofluorescence analysis of HeLa tissue using CK-18 Monoclonal Antibody at dilution of 1:100.

Preparation & Storage

Storage Store at -20°C. Avoid freeze / thaw cycles.

Background

Involved in the uptake of thrombin-antithrombin complexes by hepatic cells (By similarity). When phosphorylated, plays a role in filament reorganization. Involved in the delivery of mutated CFTR to the plasma membrane. Together with KRT8, is involved in interleukin-6 (IL-6)-mediated barrier protection.

For Research Use Only