

## CK-18 Monoclonal Antibody

**Catalog No.** E-AB-22054

*Note:* Centrifuge before opening to ensure complete recovery of vial contents.

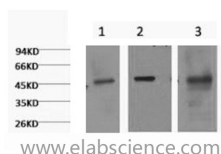
### Description

<b>Reactivity</b>	Human,Mouse
<b>Immunogen</b>	Recombinant Protein
<b>Host</b>	Mouse
<b>Isotype</b>	IgG
<b>Clone</b>	Clone:3H6
<b>Purification</b>	Protein A purification
<b>Buffer</b>	PBS with 0.02% sodium azide and 50% glycerol pH 7.4.

### Applications Recommended Dilution

**WB** 1:500-1000

### Data



Western Blot analysis of 1) HeLa, 2) HepG2, 3) Mouse skeletal muscle using CK-18 Monoclonal Antibody at dilution of 1:1000.

**Observed Mw:46kDa**  
**Calculated Mw:48kDa**

### Preparation & Storage

**Storage** Store at -20°C. Avoid freeze / thaw cycles.

### Background

Cytokeratin 18 (CK18) has a molecular weight of 45 KDa, which is a low molecular weight type A cytokeratin. It is a marker of simple epithelium, including glandular epithelium. The stratified squamous epithelium is generally negative. CK18 is mainly used in the diagnosis of adenocarcinoma.

### For Research Use Only