

## HSP90 beta Monoclonal Antibody

Catalog No. E-AB-22072

*Note:* Centrifuge before opening to ensure complete recovery of vial contents.

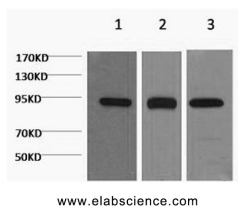
### Description

<b>Reactivity</b>	Human,Mouse,Rat
<b>Immunogen</b>	Synthetic Peptide
<b>Host</b>	Mouse
<b>Isotype</b>	IgG
<b>Clone</b>	Clone:1G2
<b>Purification</b>	Protein A purification
<b>Conjugation</b>	Unconjugated
<b>Buffer</b>	PBS with 0.02% sodium azide and 50% glycerol pH 7.4.

### Applications Recommended Dilution

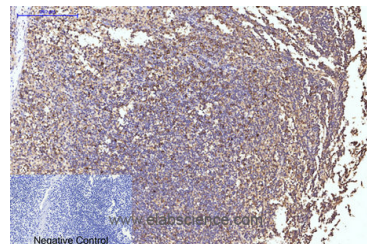
**WB 1:500-1:2000,**  
**IHC 1:50-1:300, IF**  
**1:100-1:300**

### Data

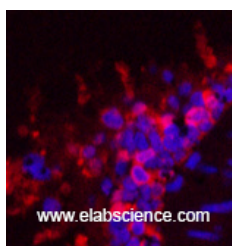


Western Blot analysis of 1) Hela, 2) Mouse brain, 3) Rat brain using HSP90 beta Monoclonal Antibody at dilution of 1:2000.

**Observed Mw:90kDa**  
**Calculated Mw:83kDa**



Immunohistochemistry of paraffin-embedded Human tonsil tissue using HSP90 beta Monoclonal Antibody at dilution of 1:200.



Immunofluorescence analysis of Rat lung tissue using HSP90 beta Monoclonal Antibody at dilution of 1:200.

### For Research Use Only

## Preparation & Storage

**Storage**                      Store at -20°C. Avoid freeze / thaw cycles.

## Background

Molecular chaperone that promotes the maturation, structural maintenance and proper regulation of specific target proteins involved for instance in cell cycle control and signal transduction. Undergoes a functional cycle that is linked to its ATPase activity. This cycle probably induces conformational changes in the client proteins, thereby causing their activation. Interacts dynamically with various co-chaperones that modulate its substrate recognition, ATPase cycle and chaperone function.

---

## For Research Use Only