

FN1 Monoclonal Antibody

Catalog Number: E-AB-22077

2 Publications



Note: Centrifuge before opening to ensure complete recovery of vial contents.

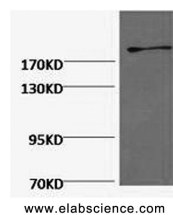
Description

Reactivity	Human, Mouse, Rat
Immunogen	Synthetic Peptide
Host	Mouse
Isotype	IgG
Clone	Clone: 9A5
Purification	Protein A purification
Conjugation	Unconjugated
Formulation	PBS with 0.02% sodium azide and 50% glycerol pH 7.4.

Applications

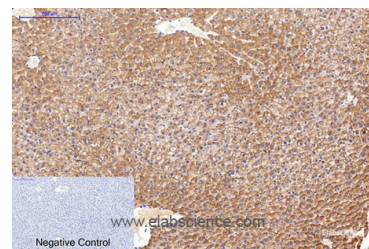
Applications	Recommended Dilution
WB	1:500-1:2000
IHC	1:50-1:300
IF	1:100-1:300

Data

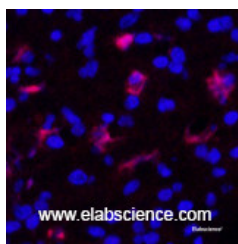


Western Blot analysis of HeLa cells using FN1 Monoclonal Antibody at dilution of 1:2000.

Observed Mw: 285kDa
Calculated Mw: 263kDa



Immunohistochemistry of paraffin-embedded Rat liver tissue using FN1 Monoclonal Antibody at dilution of 1:200.



Immunofluorescence analysis of Human appendix tissue using FN1 Monoclonal Antibody at dilution of 1:200.

Preparation & Storage

Storage Store at -20°C. Avoid freeze / thaw cycles.

Background

For Research Use Only

A Reliable Research Partner in Life Science and Medicine

Toll-free: 1-888-852-8623

Web: www.elabscience.com

Tel: 1-832-243-6086

Email: techsupport@elabscience.com

Fax: 1-832-243-6017

FN1 Monoclonal Antibody

Catalog Number: E-AB-22077

2 Publications



This gene encodes fibronectin, a glycoprotein present in a soluble dimeric form in plasma, and in a dimeric or multimeric form at the cell surface and in extracellular matrix. Fibronectin is involved in cell adhesion and migration processes including embryogenesis, wound healing, blood coagulation, host defense, and metastasis. The gene has three regions subject to alternative splicing, with the potential to produce 20 different transcript variants. However, the full-length nature of some variants has not been determined.

For Research Use Only

A Reliable Research Partner in Life Science and Medicine

Toll-free: 1-888-852-8623

Tel: 1-832-243-6086

Fax: 1-832-243-6017

Web: www.elabscience.com

Email: techsupport@elabscience.com