

## ACTA1 Monoclonal Antibody

**Catalog No.** E-AB-22080

*Note:* Centrifuge before opening to ensure complete recovery of vial contents.

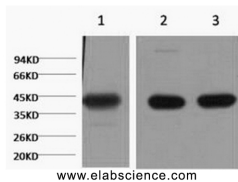
### Description

<b>Reactivity</b>	Human,Mouse,Rat
<b>Immunogen</b>	Synthetic Peptide
<b>Host</b>	Mouse
<b>Isotype</b>	IgG
<b>Purification</b>	Protein A purification
<b>Conjugation</b>	Unconjugated
<b>Buffer</b>	PBS with 0.02% sodium azide and 50% glycerol pH 7.4.

### Applications Recommended Dilution

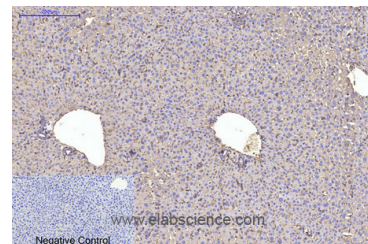
<b>WB</b>	1:500-10000
<b>IHC</b>	1:50-300
<b>IF</b>	1:50-1:200
<b>IP</b>	1:100-1:300

### Data

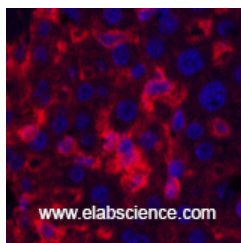


Western Blot analysis of 1) HeLa, 2) Mouse brain, 3) Rat brain using ACTA1 Monoclonal Antibody at dilution of 1:1000.

**Observed Mw:42kDa**  
**Calculated Mw:42kDa**



Immunohistochemistry of paraffin-embedded Mouse liver tissue using ACTA1 Monoclonal Antibody at dilution of 1:200.



Immunofluorescence analysis of Mouse liver tissue using ACTA1 Monoclonal Antibody at dilution of 1:200.

### For Research Use Only

## Preparation & Storage

**Storage**                      Store at -20°C. Avoid freeze / thaw cycles.

## Background

Actins are highly conserved proteins that are involved in various types of cell motility and are ubiquitously expressed in all eukaryotic cells.