

ACTA1 Monoclonal Antibody

Catalog Number:E-AB-22080



Note: Centrifuge before opening to ensure complete recovery of vial contents.

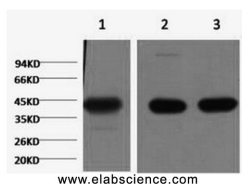
Description

Reactivity	Human,Mouse,Rat
Immunogen	Synthetic Peptide
Host	Mouse
Isotype	IgG
Clone	Clone:4A6
Purification	Protein A purification
Conjugation	Unconjugated
Formulation	PBS with 0.02% sodium azide and 50% glycerol pH 7.4.

Applications Recommended Dilution

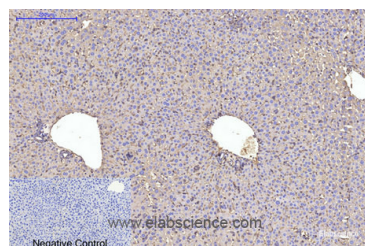
WB	1:500-10000
IHC	1:50-300
IF	1:50-1:200
IP	1:100-1:300

Data

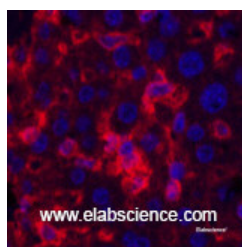


Western Blot analysis of 1) Hela, 2) Mouse brain, 3) Rat brain using ACTA1 Monoclonal Antibody at dilution of 1:1000.

Observed Mw:42kDa
Calculated Mw:42kDa



Immunohistochemistry of paraffin-embedded Mouse liver tissue using ACTA1 Monoclonal Antibody at dilution of 1:200.



Immunofluorescence analysis of Mouse liver tissue using ACTA1 Monoclonal Antibody at dilution of 1:200.

Preparation & Storage

Storage Store at -20°C. Avoid freeze / thaw cycles.

For Research Use Only

A Reliable Research Partner in Life Science and Medicine

Toll-free: 1-888-852-8623

Web: www.elabscience.com

Tel: 1-832-243-6086

Email: techsupport@elabscience.com

Fax: 1-832-243-6017

ACTA1 Monoclonal Antibody

Catalog Number:E-AB-22080



Background

Actins are highly conserved proteins that are involved in various types of cell motility and are ubiquitously expressed in all eukaryotic cells.

For Research Use Only

A Reliable Research Partner in Life Science and Medicine

Toll-free: 1-888-852-8623

Web: www.elabscience.com

Tel: 1-832-243-6086

Email: techsupport@elabscience.com

Fax: 1-832-243-6017