

AFM Monoclonal Antibody

Catalog No. E-AB-27008

Note: Centrifuge before opening to ensure complete recovery of vial contents.

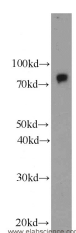
Description

Reactivity	Human,Mouse
Immunogen	Fusion protein of AFM
Host	Mouse
Isotype	IgG1
Clone	Clone:790
Purification	Protein G purification
Conjugation	Unconjugated
Buffer	PBS with 0.02% sodium azide, 50% glycerol, PH7.3

Applications Recommended Dilution

WB 1:1000-1:10000,
IHC 1:20-1:200, IF
1:50-1:500

Data



Western Blot analysis of Human plasma tissue using
AFM Monoclonal Antibody at dilution of 1:4000

Observed Mw:85kDa
Calculated Mw:599aa, 69kDa

Preparation & Storage

Storage Store at -20°C. Avoid freeze / thaw cycles.

Background

AFM (Afinin) is a member of the albumin superfamily, which comprises albumin, vitamin D-binding protein, α-fetoprotein, and afinin. AFM is present in the plasma/serum, cerebrospinal fluid, and follicular fluid, and functions as a vitamin E-binding protein. Alterations of expression level of AFM have been linked to variety of diseases like cancer.

For Research Use Only