

CD166 Monoclonal Antibody

Catalog No. E-AB-27013

Note: Centrifuge before opening to ensure complete recovery of vial contents.

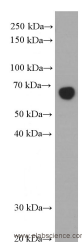
Description

Reactivity	Human,Rat
Immunogen	Fusion protein of Albumin
Host	Mouse
Isotype	IgG1
Clone	Clone:384
Purification	Protein G purification
Conjugation	Unconjugated
Buffer	PBS with 0.02% sodium azide, 50% glycerol, PH7.3

Applications Recommended Dilution

WB 1:5000-1:50000,
IHC 1:20-1:200, IF
1:20-1:200

Data



Western Blot analysis of Human plasma using CD166
Monoclonal Antibody at dilution of 1:10000

Observed Mw:66kDa
Calculated Mw:609aa, 69kDa

Preparation & Storage

Storage Store at -20°C. Avoid freeze / thaw cycles.

Background

Albumin is the most abundant protein in blood plasma. Alterations of level of serum albumin are linked to variety of diseases. Albumin is expressed exclusively by well-differentiated hepatocytes, thus anti-albumin has been used to mark hepatocytes. (21388516,23832071)

For Research Use Only