

## ALDH1A1 Monoclonal Antibody

**Catalog No.** E-AB-27014

*Note:* Centrifuge before opening to ensure complete recovery of vial contents.

### Description

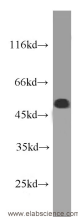
<b>Reactivity</b>	Human,Mouse,Rat
<b>Immunogen</b>	Fusion protein of ALDH1A1
<b>Host</b>	Mouse
<b>Isotype</b>	IgG1
<b>Clone</b>	Clone:395
<b>Purification</b>	Protein G purification
<b>Conjugation</b>	Unconjugated
<b>Buffer</b>	PBS with 0.1% sodium azide, 50% glycerol, PH7.3

### Applications

### Recommended Dilution

**IF 1:20-1:200**

### Data



Western Blot analysis of MCF7 cells using ALDH1A1  
Monoclonal Antibody at dilution of 1:500

**Observed Mw:52kDa**

**Calculated Mw:501aa, 55kDa**

### Preparation & Storage

**Storage** Store at -20°C. Avoid freeze / thaw cycles.

### Background

ALDH1A1(Aldehyde dehydrogenase family 1 member A1 ),also named as ALDC,ALDH1 and PUMB1,belongs to the aldehyde dehydrogenase family. The ALDH1A1 gene encodes a liver cytosolic isoform of acetaldehyde dehydrogenase,an enzyme involved in the major pathway of alcohol metabolism after alcohol dehydrogenase. ALDH1A1 plays a critical role in protection against oxidative stress-induced cytotoxicity in lens epithelial cells. And it is important for multiple biological activities including drug resistance,cell differentiation,and oxidative stress response. As a novel cancer stem cell marker,ALDH1A1 can be used for tumors whose corresponding normal tissues express ALDH1A1 in relatively restricted or limited levels such as breast,lung,ovarian or colon cancer.

### For Research Use Only