

## ALDOA Monoclonal Antibody

**Catalog No.** E-AB-27015

*Note:* Centrifuge before opening to ensure complete recovery of vial contents.

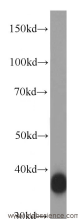
### Description

<b>Reactivity</b>	Human
<b>Immunogen</b>	Fusion protein of Aldolase C
<b>Host</b>	Mouse
<b>Isotype</b>	IgG1
<b>Clone</b>	Clone:77
<b>Purification</b>	Protein G purification
<b>Conjugation</b>	Unconjugated
<b>Buffer</b>	PBS with 0.02% sodium azide, 50% glycerol, PH7.3

### Applications Recommended Dilution

**WB 1:5000-1:50000,**  
**IHC 1:50-1:500, IF**  
**1:20-1:200**

### Data



Western Blot analysis of Human heart tissue using  
ALDOA Monoclonal Antibody at dilution of 1:10000

**Observed Mw:39kDa**  
**Calculated Mw:39kDa**

### Preparation & Storage

**Storage** Store at -20°C. Avoid freeze / thaw cycles.

### Background

Fructose-bisphosphate aldolase C (ALDOC) reversibly cleaves FBP and F1-P to glyceraldehyde 3-phosphate and dihydroxyacetone phosphate and is strongly expressed in mammalian brain together with ALDOA and is also present in the heart and spleen of some species. It is involved in glycolysis as an important enzyme. Phospholipase D2 and inositol 1,4,5-triphosphate interact with ALDOC in signal transduction. Meanwhile, the protein expression of ALDOC has been reported to be regulated in brain tumor, hepatomas, and lung cancer.

### For Research Use Only