

## A2M Monoclonal Antibody

Catalog No. E-AB-27021

*Note:* Centrifuge before opening to ensure complete recovery of vial contents.

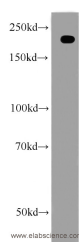
### Description

<b>Reactivity</b>	Human
<b>Immunogen</b>	Fusion protein of Alpha-2-macroglobulin
<b>Host</b>	Mouse
<b>Isotype</b>	IgG2a
<b>Clone</b>	Clone:117
<b>Purification</b>	Protein A purification
<b>Conjugation</b>	Unconjugated
<b>Buffer</b>	PBS with 0.02% sodium azide, 50% glycerol, PH7.3

### Applications Recommended Dilution

**WB 1:500-1:5000,**  
**IHC 1:20-1:200, IF**  
**1:50-1:500**

### Data



Western Blot analysis of HepG2 cells using A2M Monoclonal Antibody at dilution of 1:1000

**Observed Mw:185kDa**  
**Calculated Mw:1474aa, 163kDa**

### Preparation & Storage

**Storage** Store at -20°C. Avoid freeze / thaw cycles.

### Background

alpha-2-macroglobulin, also known as  $\alpha$ 2-macroglobulin ( $\alpha$ 2M and A2M), is a protein abundant in the plasma of vertebrates and several invertebrates. A2M is an evolutionarily conserved arm of the innate immune system. It also mediates the proliferation of T cells and macrophages. A2M acts as a nonspecific protease inhibitor involved in the host defense mechanism that inactivates both endogenous and exogenous proteases, including trypsin, thrombin and collagenase. Even though A2M is produced predominantly by the liver, it may also be expressed in the reproductive tract, heart, and brain, and may have important roles in many physiological processes and medical illnesses including Alzheimer's disease.

### For Research Use Only