

AMOT Monoclonal Antibody

Catalog No. E-AB-27022

Note: Centrifuge before opening to ensure complete recovery of vial contents.

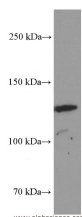
Description

Reactivity	Human
Immunogen	Synthetic Peptide
Host	Mouse
Isotype	IgG2b
Clone	Clone:678
Purification	Protein A purification
Conjugation	Unconjugated
Buffer	PBS with 0.1% sodium azide, 50% glycerol, PH7.3

Applications Recommended Dilution

WB 1:1000-1:10000,
IHC 1:20-1:200

Data



Western Blot analysis of SGC-7901 cells using AMOT
Monoclonal Antibody at dilution of 1:2000
Observed Mw:130kDa
Calculated Mw:118kDa

Preparation & Storage

Storage Store at -20°C. Avoid freeze / thaw cycles.

Background

predominantly in endothelial cells of capillaries as well as larger vessels of the placenta where it may mediate the inhibitory effect of angiostatin on tube formation and the migration of endothelial cells toward growth factors during the formation of new blood vessels. Most abundant expression was found in placenta and skeletal muscle. AMOT has two isoforms with MW 130 kDa (p130) and 80 kDa (p80). This antibody recognizes p130 only.

For Research Use Only