

## AMY2A Monoclonal Antibody

**Catalog No.** E-AB-27023

*Note:* Centrifuge before opening to ensure complete recovery of vial contents.

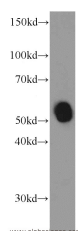
### Description

<b>Reactivity</b>	Human,Rat
<b>Immunogen</b>	Fusion protein of Amylase,alpha
<b>Host</b>	Mouse
<b>Isotype</b>	IgG2b
<b>Clone</b>	Clone:360
<b>Purification</b>	Protein A purification
<b>Conjugation</b>	Unconjugated
<b>Buffer</b>	PBS with 0.02% sodium azide, 50% glycerol, PH7.3

### Applications Recommended Dilution

**WB 1:1000-1:10000,**  
**IHC 1:20-1:200, IF**  
**1:10-1:100**

### Data



Western Blot analysis of Human saliva using AMY2A  
Monoclonal Antibody at dilution of 1:2000

**Observed Mw:58kDa**  
**Calculated Mw:511aa, 58kDa**

### Preparation & Storage

**Storage** Store at -20°C. Avoid freeze / thaw cycles.

### Background

The complete human amylase gene contains five intact genes: two pancreatic genes (AMY2A and AMY2B) and three salivary genes (AMY1A, AMY1B, and AMY1C). AMY2A (Pancreatic alpha-amylase) is also named as PA and is a 56 kDa protein consisting of 496 amino acids in a single polypeptide chain, folded into three domains. It has a hydrolase activity acting on glycosyl bonds. AMY2A and AMY2B transcripts are present in the human pancreas but not in the parotid salivary gland, while AMY1 transcripts are present in the parotid gland but not in the pancreas. This antibody can recognize amylase alpha.

### For Research Use Only