

GAPDH Polyclonal Antibody

Catalog Number:E-AB-40337

41 Publications



Note: Centrifuge before opening to ensure complete recovery of vial contents.

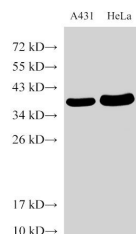
Description

Reactivity	Human,Mouse,Rat
Immunogen	Recombinant Zebrafish Glyceraldehyde-3-phosphate dehydrogenase protein
Host	Rabbit
Isotype	IgG
Purification	Antigen Affinity Purification
Conjugation	Unconjugated
Formulation	PBS with 0.05% Proclin300, 50% glycerol, pH7.3.

Applications Recommended Dilution

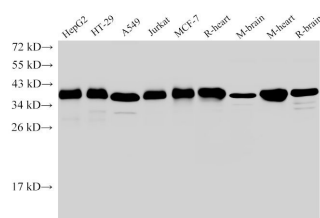
WB	1:3000-1:6000
IHC	1:300-1:500

Data

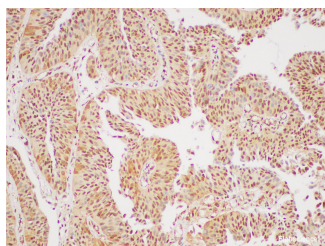


Western Blot analysis of A431 and Hela cells using GAPDH Polyclonal Antibody at dilution of 1:5000

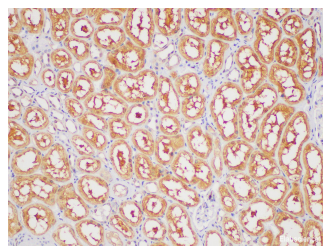
Observed Mw:35 kDa
Calculated Mw:35 kDa



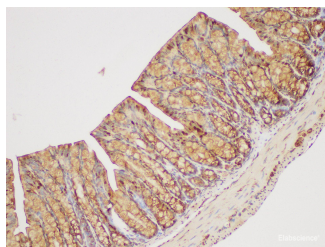
Western Blot analysis of HepG2, HT-29, A549, Jurkat, MCF-7, Rat heart, Mouse brain, Mouse heart and Rat brain using GAPDH Polyclonal Antibody at dilution of 1:5000



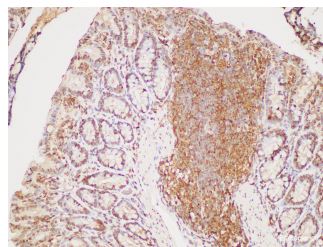
Immunohistochemistry of paraffin-embedded Human bladder cancer using GAPDH Polyclonal Antibody at dilution of 1:400



Immunohistochemistry of paraffin-embedded Human kidney using GAPDH Polyclonal Antibody at dilution of 1:400



Immunohistochemistry of paraffin-embedded Mouse



Immunohistochemistry of paraffin-embedded Rat

For Research Use Only

A Reliable Research Partner in Life Science and Medicine

Toll-free: 1-888-852-8623

Web: www.elabscience.com

Tel: 1-832-243-6086

Email: techsupport@elabscience.com

Fax: 1-832-243-6017

GAPDH Polyclonal Antibody

Catalog Number: E-AB-40337

41 Publications



colon using GAPDH Polyclonal Antibody at dilution
of 1:400

colon using GAPDH Polyclonal Antibody at dilution
of 1:400

Preparation & Storage

Storage Store at -20°C. Avoid freeze / thaw cycles.

Background

Glyceraldehyde-3-phosphate dehydrogenase (GAPDH) catalyzes the phosphorylation of glyceraldehyde-3-phosphate during glycolysis. GAPDH participates in nuclear events including transcription, binding RNA, RNA transportation, DNA replication, DNA repair and apoptosis. Being stably and constitutively expressed at high levels in most tissues and cells, GAPDH is considered a housekeeping protein. It was widely used as a control for RT-PCR and also loading control in electrophoresis and Western blotting. GAPDH is normally expressed in cellular cytoplasm or membrane, but can occasionally translocate to the nucleus post modification such as S-nitrosylation.

For Research Use Only

A Reliable Research Partner in Life Science and Medicine

Toll-free: 1-888-852-8623

Web: www.elabscience.com

Tel: 1-832-243-6086

Email: techsupport@elabscience.com

Fax: 1-832-243-6017