

S100P Polyclonal Antibody

Catalog No. E-AB-40346

Note: Centrifuge before opening to ensure complete recovery of vial contents.

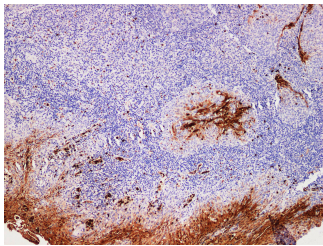
Description

Reactivity	Human
Immunogen	Recombinant Human Protein S100-P protein
Host	Rabbit
Isotype	IgG
Purification	Antigen Affinity Purification
Conjugation	Unconjugated
Buffer	PBS with 0.05% Proclin300 and 50% glycerol, pH7.4.

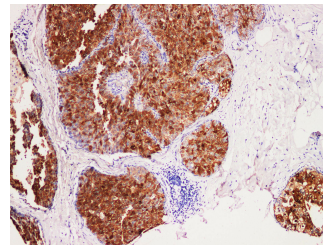
Applications Recommended Dilution

IHC 1:100-1:400

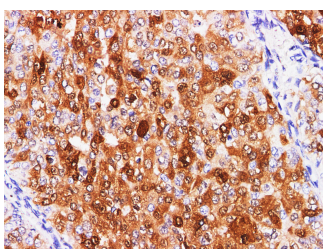
Data



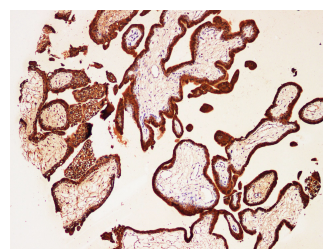
Immunohistochemistry of paraffin-embedded Human tonsil using S100P Polyclonal Antibody at dilution of 1:200



Immunohistochemistry of paraffin-embedded Human breast cancer using S100P Polyclonal Antibody at dilution of 1:200(100x)

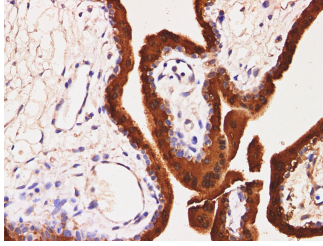


Immunohistochemistry of paraffin-embedded Human breast cancer using S100P Polyclonal Antibody at dilution of 1:200(400x)



Immunohistochemistry of paraffin-embedded Human placenta using S100P Polyclonal Antibody at dilution of 1:200(100x)

For Research Use Only



Immunohistochemistry of paraffin-embedded
Human placenta using S100P Polyclonal Antibody at
dilution of 1:200(400×)

Preparation & Storage

Storage Store at -20°C. Avoid freeze / thaw cycles.

Background

The protein encoded by this gene is a member of the S100 family of proteins containing 2 EF-hand calcium-binding motifs. S100 proteins are localized in the cytoplasm and/or nucleus of a wide range of cells, and involved in the regulation of a number of cellular processes such as cell cycle progression and differentiation. S100 genes include at least 13 members which are located as a cluster on chromosome 1q21; however, this gene is located at 4p16. This protein, in addition to binding Ca²⁺, also binds Zn²⁺ and Mg²⁺.

For Research Use Only