

14-3-3 theta Monoclonal Antibody

Catalog No. E-AB-27413

Note: Centrifuge before opening to ensure complete recovery of vial contents.

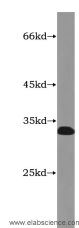
Description

| | |
|---------------------|--------------------------------------------------|
| Reactivity | Human,Rat |
| Immunogen | Fusion protein of 14-3-3 |
| Host | Mouse |
| Isotype | IgG1 |
| Clone | Clone:954 |
| Purification | Protein G purification |
| Conjugation | Unconjugated |
| Buffer | PBS with 0.02% sodium azide, 50% glycerol, PH7.3 |

Applications Recommended Dilution

WB 1:500-1:5000,
IHC 1:50-1:500, IF
1:20-1:200

Data



Western Blot analysis of Human brain tissue using
14-3-3 theta Monoclonal Antibody at dilution of
1:1000

Observed Mw:31kDa, 28kDa
Calculated Mw:28kDa

Preparation & Storage

Storage Store at -20°C. Avoid freeze / thaw cycles.

Background

14-3-3 proteins interact with a wide spectrum of proteins and possess diverse functions. Mammals express seven distinct 14-3-3 isoforms (gamma,epsilon,beta,zeta,sigma,theta,tau) that form multiple homo- and hetero- dimmers. 14-3-3 proteins display the highest expression levels in the brain,and have been implicated in several neurodegenerative diseases,including Alzheimer's disease and amyotrophic lateral sclerosis. This antibody recognizes 14-3-3 tau (YWHAQ),eta (YWHAH),and zeta (YWHAZ),but not epsilon (YWHAE).

For Research Use Only