

## 14-3-3 sigma Monoclonal Antibody

Catalog No. E-AB-27562

*Note:* Centrifuge before opening to ensure complete recovery of vial contents.

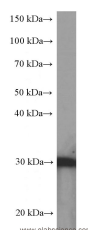
### Description

<b>Reactivity</b>	Human
<b>Immunogen</b>	Fusion protein of 14-3-3 sigma
<b>Host</b>	Mouse
<b>Isotype</b>	IgG1
<b>Clone</b>	Clone:954
<b>Purification</b>	Protein G purification
<b>Conjugation</b>	Unconjugated
<b>Buffer</b>	PBS with 0.02% sodium azide, 50% glycerol, PH7.3

### Applications Recommended Dilution

**WB 1:1000-1:10000,**  
**IHC 1:200-1:8000, IF**  
**1:20-1:200**

### Data



Western Blot analysis of MCF-7 cells using 14-3-3 sigma Monoclonal Antibody at dilution of 1:2000

**Observed Mw:28-30kDa**  
**Calculated Mw:28kDa**

### Preparation & Storage

**Storage** Store at -20°C. Avoid freeze / thaw cycles.

### Background

14-3-3 sigma is a member 14-3-3 family of highly conserved proteins participating in diverse cellular processes including cell cycle progression. It is exclusively present in various epithelial cells, and alternatively named as human epithelial marker (HEM), or stratifin. Alteration of its expression has been linked to cancer.

### For Research Use Only