

VPS51 Polyclonal Antibody

Catalog No. E-AB-17740

Note: Centrifuge before opening to ensure complete recovery of vial contents.

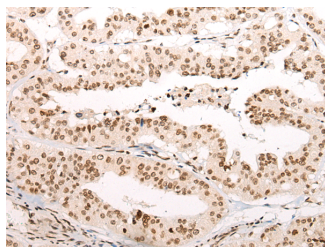
Description

Reactivity	Human, Mouse
Immunogen	Synthetic peptide of human VPS51
Host	Rabbit
Isotype	IgG
Purification	Antigen affinity purification
Conjugation	Unconjugated
Buffer	PBS with 0.05% NaN ₃ and 40% Glycerol, pH7.4

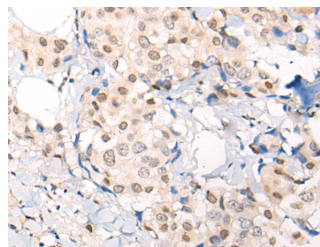
Applications Recommended Dilution

IHC 1:40-1:200

Data



Immunohistochemistry of paraffin-embedded Human liver cancer tissue using VPS51 Polyclonal Antibody at dilution of 1:65(×200)



Immunohistochemistry of paraffin-embedded Human breast cancer tissue using VPS51 Polyclonal Antibody at dilution of 1:65(×200)

Preparation & Storage

Storage Store at -20°C. Avoid freeze / thaw cycles.

Background

This gene encodes a member of the vacuolar protein sorting-associated protein 51 family. The encoded protein is a component of the Golgi-associated retrograde protein complex which acts as a tethering factor for carriers in retrograde transport from the early and late endosomes to the trans-Golgi network. Alternative splicing results in multiple transcript variants.

For Research Use Only