

SIGLECL1 Polyclonal Antibody

Catalog No. E-AB-17748

Note: Centrifuge before opening to ensure complete recovery of vial contents.

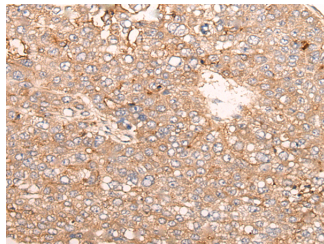
Description

| | |
|---------------------|---------------------------------------------------------|
| Reactivity | Human |
| Immunogen | Synthetic peptide of human SIGLECL1 |
| Host | Rabbit |
| Isotype | IgG |
| Purification | Antigen affinity purification |
| Conjugation | Unconjugated |
| Buffer | PBS with 0.05% NaN ₃ and 40% Glycerol, pH7.4 |

Applications Recommended Dilution

IHC 1:40-1:200

Data



Immunohistochemistry of paraffin-embedded Human liver cancer tissue using SIGLECL1 Polyclonal Antibody at dilution of 1:65(×200)

Preparation & Storage

Storage Store at -20°C. Avoid freeze / thaw cycles.

Background

Putative adhesion molecule that mediates sialic-acid dependent binding to cells. The sialic acid recognition site may be masked by cis interactions with sialic acids on the same cell surface.

For Research Use Only