

CALB1 Polyclonal Antibody

Catalog Number:E-AB-17761

Note: Centrifuge before opening to ensure complete recovery of vial contents.

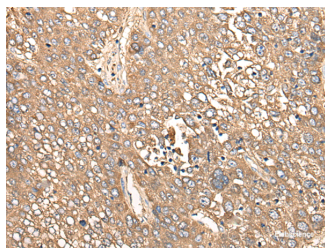
Description

Reactivity	Human, Mouse, Rat
Immunogen	Synthetic peptide of human CALB1
Host	Rabbit
Isotype	IgG
Purification	Antigen affinity purification
Conjugation	Unconjugated
Formulation	PBS with 0.05% NaN ₃ and 40% Glycerol,pH7.4

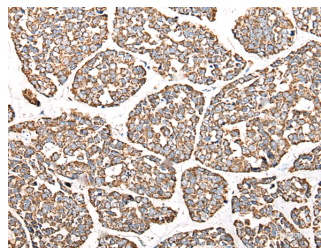
Applications Recommended Dilution

IHC	1:50-1:300
ELISA	1:5000-1:10000

Data



Immunohistochemistry of paraffin-embedded Human liver cancer tissue using CALB1 Polyclonal Antibody at dilution of 1:80(×200)



Immunohistochemistry of paraffin-embedded Human esophagus cancer tissue using CALB1 Polyclonal Antibody at dilution of 1:80(×200)

Preparation & Storage

Storage Store at -20°C. Avoid freeze / thaw cycles.

Background

Calbindin-D28k is a member of the calcium-binding protein superfamily that includes calmodulin and troponin C. It is a cytosolic calcium binding protein highly expressed in the distal tubule,intestines,central nervous system,primary murine osteoblast cells and in several other organs. It plays an important role in the intracellular calcium homeostasis,its strong buffering capacity prevents cytotoxic effect of high concentration of free calcium in kidney,brain,pancreas,and intestine.

For Research Use Only

A Reliable Research Partner in Life Science and Medicine

Toll-free: 1-888-852-8623

Web: www.elabscience.com

Tel: 1-832-243-6086

Email: techsupport@elabscience.com

Fax: 1-832-243-6017