

CYB5D1 Polyclonal Antibody

Catalog Number:E-AB-17876

Note: Centrifuge before opening to ensure complete recovery of vial contents.

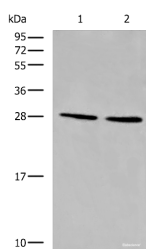
Description

Reactivity	Human, Mouse
Immunogen	Synthetic peptide of human CYB5D1
Host	Rabbit
Isotype	IgG
Purification	Antigen affinity purification
Conjugation	Unconjugated
Formulation	PBS with 0.05% NaN3 and 40% Glycerol,pH7.4

Applications Recommended Dilution

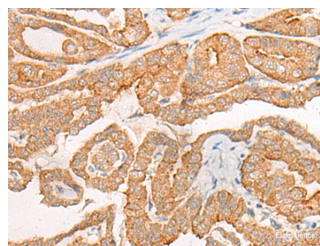
WB	1:500-1:2000
IHC	1:40-1:200
ELISA	1:5000-1:10000

Data



Western blot analysis of LOVO and 231 cell lysates using CYB5D1 Polyclonal Antibody at dilution of 1:650

Observed Mw:Refer to figures
Calculated Mw:27 kDa



Immunohistochemistry of paraffin-embedded Human thyroid cancer tissue using CYB5D1 Polyclonal Antibody at dilution of 1:45(×200)

Preparation & Storage

Storage Store at -20°C. Avoid freeze / thaw cycles.

Background

CYB5D1 (Cytochrome B5 Domain Containing 1) is a Protein Coding gene. Gene Ontology (GO) annotations related to this gene include heme binding.

For Research Use Only

A Reliable Research Partner in Life Science and Medicine

Toll-free: 1-888-852-8623

Web: www.elabscience.com

Tel: 1-832-243-6086

Email: techsupport@elabscience.com

Fax: 1-832-243-6017