

# DMRTA2 Polyclonal Antibody

Catalog Number:E-AB-17890



**Note:** Centrifuge before opening to ensure complete recovery of vial contents.

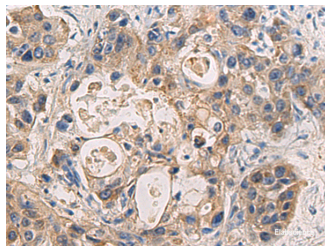
## Description

|                     |  |
|---------------------|--|
| <b>Reactivity</b>   | Human, Mouse   |
| <b>Immunogen</b>    | Synthetic peptide of human DMRTA2                      |
| <b>Host</b>         | Rabbit   |
| <b>Isotype</b>      | IgG  |
| <b>Purification</b> | Antigen affinity purification                          |
| <b>Conjugation</b>  | Unconjugated   |
| <b>Formulation</b>  | PBS with 0.05% NaN <sub>3</sub> and 40% Glycerol,pH7.4 |

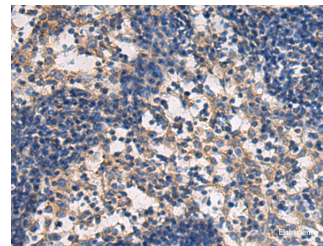
## Applications Recommended Dilution

|              |                |
|--------------|----------------|
| <b>IHC</b>   | 1:50-1:200     |
| <b>ELISA</b> | 1:5000-1:10000 |

## Data



Immunohistochemistry of paraffin-embedded Human liver cancer tissue using DMRTA2 Polyclonal Antibody at dilution of 1:50(×200)



Immunohistochemistry of paraffin-embedded Human esophagus cancer tissue using DMRTA2 Polyclonal Antibody at dilution of 1:50(×200)

## Preparation & Storage

**Storage** Store at -20°C. Avoid freeze / thaw cycles.

## Background

DMRTA2 (DMRT Like Family A2) is a Protein Coding gene. Gene Ontology (GO) annotations related to this gene include DNA-binding transcription factor activity and sequence-specific DNA binding. An important paralog of this gene is DMRTA1.

## For Research Use Only

A Reliable Research Partner in Life Science and Medicine

Toll-free: 1-888-852-8623

Web: [www.elabscience.com](http://www.elabscience.com)

Tel: 1-832-243-6086

Email: [techsupport@elabscience.com](mailto:techsupport@elabscience.com)

Fax: 1-832-243-6017