

## FAM200A Polyclonal Antibody

**Catalog No.** E-AB-17941

*Note:* Centrifuge before opening to ensure complete recovery of vial contents.

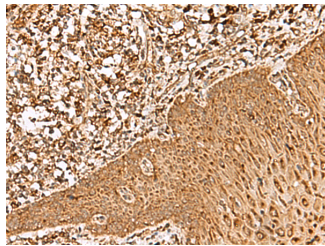
### Description

<b>Reactivity</b>	Human
<b>Immunogen</b>	Synthetic peptide of human FAM200A
<b>Host</b>	Rabbit
<b>Isotype</b>	IgG
<b>Purification</b>	Antigen affinity purification
<b>Conjugation</b>	Unconjugated
<b>Buffer</b>	PBS with 0.05% NaN <sub>3</sub> and 40% Glycerol,pH7.4

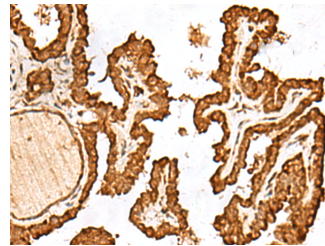
### Applications Recommended Dilution

**IHC** 1:50-1:300

### Data



Immunohistochemistry of paraffin-embedded Human esophagus cancer tissue using FAM200A Polyclonal Antibody at dilution of 1:55(×200)



Immunohistochemistry of paraffin-embedded Human thyroid cancer tissue using FAM200A Polyclonal Antibody at dilution of 1:55(×200)

### Preparation & Storage

**Storage** Store at -20°C. Avoid freeze / thaw cycles.

### Background

This gene encodes a protein of unknown function. The protein is weakly similar to transposase-like proteins in human and mouse.

### For Research Use Only