

FAM84A Polyclonal Antibody

Catalog No. E-AB-17944

Note: Centrifuge before opening to ensure complete recovery of vial contents.

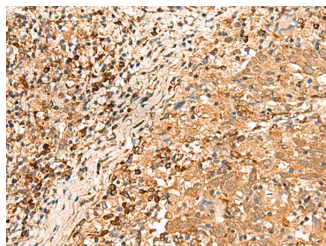
Description

Reactivity	Human, Mouse
Immunogen	Synthetic peptide of human FAM84A
Host	Rabbit
Isotype	IgG
Purification	Antigen affinity purification
Conjugation	Unconjugated
Buffer	PBS with 0.05% NaN ₃ and 40% Glycerol, pH7.4

Applications Recommended Dilution

IHC	1:30-1:150
ELISA	1:5000-1:10000

Data



Immunohistochemistry of paraffin-embedded Human cervical cancer tissue using FAM84A Polyclonal Antibody at dilution of 1:25(×200)

Preparation & Storage

Storage Store at -20°C. Avoid freeze / thaw cycles.

Background

FAM84A (family with sequence similarity 84, member A), also known as NSE1 (neurologic sensory protein 1), is a 292 amino acid protein that belongs to the FAM84 family of proteins. Predominantly expressed in testis, FAM84A shares 44% amino acid identity with the related protein FAM84B. FAM84A localizes to a subcellular membrane region where there is no contact between neighboring cells and is believed to play a role in cell morphology and motility. More specifically, the expression of FAM84A increases cell motility. Two FAM84A isoforms are expressed due to alternative splicing events. Isoform 2 can be phosphorylated on various serine residues and this phosphorylation is associated with cellular morphology. FAM84A is upregulated in colorectal cancer, lung cancer, pancreatic cancer, cholangiocarcinoma and bladder cancer tissues. Via its ability to increase cell motility, FAM84A may contribute to the invasion and metastasis of cancer cells.

For Research Use Only