

## FAM84B Polyclonal Antibody

**Catalog No.** E-AB-17945

*Note:* Centrifuge before opening to ensure complete recovery of vial contents.

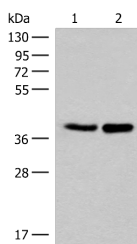
### Description

<b>Reactivity</b>	Human
<b>Immunogen</b>	Synthetic peptide of human FAM84B
<b>Host</b>	Rabbit
<b>Isotype</b>	IgG
<b>Purification</b>	Antigen affinity purification
<b>Conjugation</b>	Unconjugated
<b>Buffer</b>	PBS with 0.05% NaN <sub>3</sub> and 40% Glycerol,pH7.4

### Applications Recommended Dilution

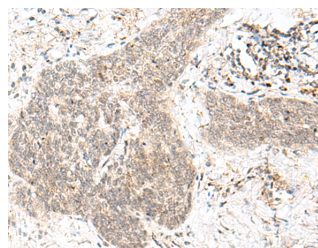
<b>WB</b>	1:500-1:2000
<b>IHC</b>	1:50-1:300

### Data

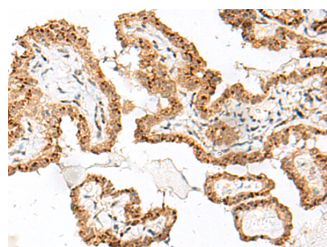


Western blot analysis of HUVEC and PC3 cell lysates using FAM84B Polyclonal Antibody at dilution of 1:400

**Observed Mw:Refer to figures**  
**Calculated Mw:34 kDa**



Immunohistochemistry of paraffin-embedded Human esophagus cancer tissue using FAM84B Polyclonal Antibody at dilution of 1:70(×200)



Immunohistochemistry of paraffin-embedded Human thyroid cancer tissue using FAM84B Polyclonal Antibody at dilution of 1:70(×200)

### Preparation & Storage

#### For Research Use Only

**Storage** Store at -20°C. Avoid freeze / thaw cycles.

## Background

FAM84B (Family With Sequence Similarity 84 Member B) is a Protein Coding gene. Diseases associated with FAM84B include Prostate Cancer Susceptibility. An important paralog of this gene is FAM84A.