

FOXQ1 Polyclonal Antibody

Catalog Number:E-AB-17974



Note: Centrifuge before opening to ensure complete recovery of vial contents.

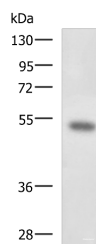
Description

| | |
|---------------------|--|
| Reactivity | Human |
| Immunogen | Synthetic peptide of human FOXQ1 |
| Host | Rabbit |
| Isotype | IgG |
| Purification | Antigen affinity purification |
| Conjugation | Unconjugated |
| Formulation | PBS with 0.05% NaN3 and 40% Glycerol,pH7.4 |

Applications Recommended Dilution

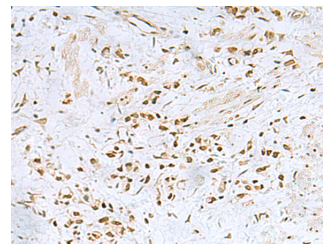
| | |
|--------------|----------------|
| WB | 1:500-1:2000 |
| IHC | 1:25-1:50 |
| ELISA | 1:5000-1:10000 |

Data

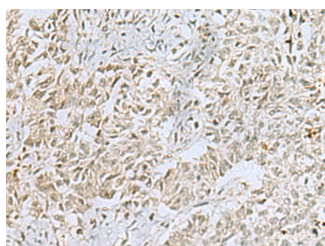


Western blot analysis of Mouse kidney tissue lysate using FOXQ1 Polyclonal Antibody at dilution of 1:650

Observed Mw:Refer to figures
Calculated Mw:42 kDa



Immunohistochemistry of paraffin-embedded Human gastric cancer tissue using FOXQ1 Polyclonal Antibody at dilution of 1:25(×200)



Immunohistochemistry of paraffin-embedded Human ovarian cancer tissue using FOXQ1 Polyclonal Antibody at dilution of 1:25(×200)

Preparation & Storage

Storage Store at -20°C. Avoid freeze / thaw cycles.

Background

For Research Use Only

A Reliable Research Partner in Life Science and Medicine

Toll-free: 1-888-852-8623

Web: www.elabscience.com

Tel: 1-832-243-6086

Email: techsupport@elabscience.com

Fax: 1-832-243-6017

FOXQ1 Polyclonal Antibody

Catalog Number:E-AB-17974



FOXQ1 is a member of the FOX gene family, which is characterized by a conserved 110-amino acid DNA-binding motif called the forkhead or winged helix domain. FOX genes are involved in embryonic development, cell cycle regulation, tissue-specific gene expression, cell signaling, and tumorigenesis (Bieller et al., 2001 [PubMed 11747606]).

For Research Use Only

A Reliable Research Partner in Life Science and Medicine

Toll-free: 1-888-852-8623

Tel: 1-832-243-6086

Fax: 1-832-243-6017

Web: www.elabscience.com

Email: techsupport@elabscience.com