

TAAR2 Polyclonal Antibody

Catalog Number:E-AB-18035



Note: Centrifuge before opening to ensure complete recovery of vial contents.

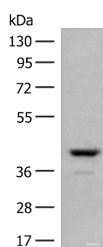
Description

Reactivity	Human, Mouse, Rat
Immunogen	Synthetic peptide of human TAAR2
Host	Rabbit
Isotype	IgG
Purification	Antigen affinity purification
Conjugation	Unconjugated
Formulation	PBS with 0.05% NaN ₃ and 40% Glycerol,pH7.4

Applications Recommended Dilution

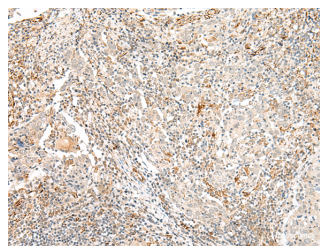
WB	1:500-1:2000
IHC	1:30-1:150
ELISA	1:5000-1:10000

Data



Western blot analysis of Human fetal brain tissue lysate using TAAR2 Polyclonal Antibody at dilution of 1:350

Observed Mw:Refer to figures
Calculated Mw:40 kDa



Immunohistochemistry of paraffin-embedded Human cervical cancer tissue using TAAR2 Polyclonal Antibody at dilution of 1:40(×200)

Preparation & Storage

Storage Store at -20°C. Avoid freeze / thaw cycles.

Background

Not expressed in the pons, thalamus, hypothalamus, hippocampus, caudate, putamen, frontal cortex, basal forebrain, midbrain or liver.

For Research Use Only

A Reliable Research Partner in Life Science and Medicine

Toll-free: 1-888-852-8623

Web: www.elabscience.com

Tel: 1-832-243-6086

Email: techsupport@elabscience.com

Fax: 1-832-243-6017