

GPR89A/GPR89B Polyclonal Antibody

Catalog Number:E-AB-18049



Note: Centrifuge before opening to ensure complete recovery of vial contents.

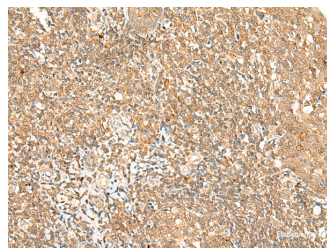
Description

Reactivity	Human, Mouse
Immunogen	Synthetic peptide of human GPR89A/GPR89B
Host	Rabbit
Isotype	IgG
Purification	Antigen affinity purification
Conjugation	Unconjugated
Formulation	PBS with 0.05% NaN ₃ and 40% Glycerol,pH7.4

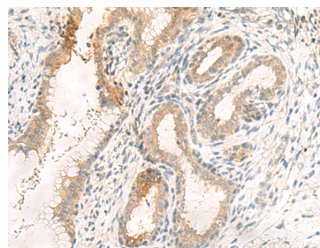
Applications Recommended Dilution

IHC	1:30-1:150
ELISA	1:5000-1:10000

Data



Immunohistochemistry of paraffin-embedded Human tonsil tissue using GPR89A/GPR89B Polyclonal Antibody at dilution of 1:25(×200)



Immunohistochemistry of paraffin-embedded Human cervical cancer tissue using GPR89A/GPR89B Polyclonal Antibody at dilution of 1:25(×200)

Preparation & Storage

Storage Store at -20°C. Avoid freeze / thaw cycles.

Background

GPR89A is a nearly identical copy of the GPR89B gene (MIM 612806). Voltage dependent anion channel required for acidification and functions of the Golgi apparatus that may function in counter-ion conductance.

For Research Use Only

A Reliable Research Partner in Life Science and Medicine

Toll-free: 1-888-852-8623

Web: www.elabscience.com

Tel: 1-832-243-6086

Email: techsupport@elabscience.com

Fax: 1-832-243-6017