

LGALSL Polyclonal Antibody

Catalog No. E-AB-18059

Note: Centrifuge before opening to ensure complete recovery of vial contents.

Description

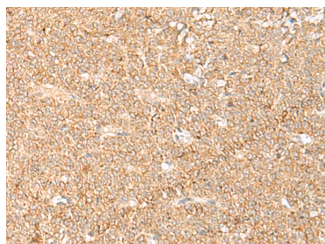
Reactivity	Human, Mouse
Immunogen	Synthetic peptide of human LGALSL
Host	Rabbit
Isotype	IgG
Purification	Antigen affinity purification
Conjugation	Unconjugated
Buffer	PBS with 0.05% NaN ₃ and 40% Glycerol, pH7.4

Applications

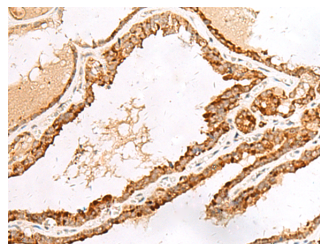
Recommended Dilution

IHC 1:50-1:300

Data



Immunohistochemistry of paraffin-embedded Human ovarian cancer tissue using LGALSL Polyclonal Antibody at dilution of 1:70(×200)



Immunohistochemistry of paraffin-embedded Human thyroid cancer tissue using LGALSL Polyclonal Antibody at dilution of 1:70(×200)

Preparation & Storage

Storage Store at -20°C. Avoid freeze / thaw cycles.

Background

Does not bind lactose, and may not bind carbohydrates.

For Research Use Only