

## GTF3C3 Polyclonal Antibody

**Catalog No.** E-AB-18064

**Note:** Centrifuge before opening to ensure complete recovery of vial contents.

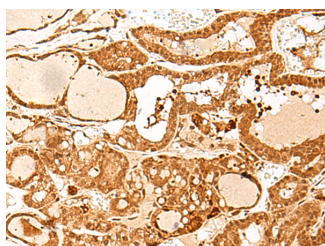
### Description

<b>Reactivity</b>	Human
<b>Immunogen</b>	Synthetic peptide of human GTF3C3
<b>Host</b>	Rabbit
<b>Isotype</b>	IgG
<b>Purification</b>	Antigen affinity purification
<b>Conjugation</b>	Unconjugated
<b>Buffer</b>	PBS with 0.05% NaN <sub>3</sub> and 40% Glycerol, pH7.4

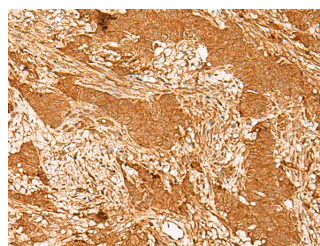
### Applications Recommended Dilution

<b>IHC</b>	1:40-1:200
------------	------------

### Data



Immunohistochemistry of paraffin-embedded Human thyroid cancer tissue using GTF3C3 Polyclonal Antibody at dilution of 1:30(×200)



Immunohistochemistry of paraffin-embedded Human ovarian cancer tissue using GTF3C3 Polyclonal Antibody at dilution of 1:30(×200)

### Preparation & Storage

**Storage** Store at -20°C. Avoid freeze / thaw cycles.

### Background

The protein encoded by this gene is part of the TFIIC2 complex, which binds to the promoters of small nuclear and cytoplasmic RNA genes in order to recruit RNA polymerase III. The TFIIC2 complex is composed of six subunits. Two transcript variants encoding different isoforms have been found for this gene. GTF3C3 (General Transcription Factor IIIC Subunit 3) is a Protein Coding gene. Diseases associated with GTF3C3 include Tooth Agenesis. Among its related pathways are Gene Expression and RNA Polymerase III Transcription Initiation.

### For Research Use Only