

## HNRNPA1L2 Polyclonal Antibody

**Catalog No.** E-AB-18077

**Note:** Centrifuge before opening to ensure complete recovery of vial contents.

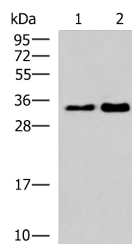
### Description

|                     |  |
|---------------------|--|
| <b>Reactivity</b>   | Human  |
| <b>Immunogen</b>    | Synthetic peptide of human HNRNPA1L2                   |
| <b>Host</b>         | Rabbit   |
| <b>Isotype</b>      | IgG  |
| <b>Purification</b> | Antigen affinity purification                          |
| <b>Conjugation</b>  | Unconjugated   |
| <b>Buffer</b>       | PBS with 0.05% NaN <sub>3</sub> and 40% Glycerol,pH7.4 |

### Applications Recommended Dilution

**WB** 1:500-1:2000

### Data



Western blot analysis of 293T cell lysates using HNRNPA1L2 Polyclonal Antibody at dilution of 1:500

**Observed Mw:Refer to figures**  
**Calculated Mw:34 kDa**

### Preparation & Storage

**Storage** Store at -20°C. Avoid freeze / thaw cycles.

### Background

HNRNPA1L2 (Heterogeneous Nuclear Ribonucleoprotein A1 Like 2) is a Protein Coding gene. Among its related pathways are mRNA Splicing - Major Pathway. Gene Ontology (GO) annotations related to this gene include nucleic acid binding and nucleotide binding. An important paralog of this gene is HNRNPA1.

### For Research Use Only