

# HLA-DOB Polyclonal Antibody

Catalog Number:E-AB-18081



**Note:** Centrifuge before opening to ensure complete recovery of vial contents.

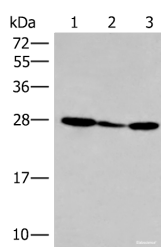
## Description

<b>Reactivity</b>	Human
<b>Immunogen</b>	Synthetic peptide of human HLA-DOB
<b>Host</b>	Rabbit
<b>Isotype</b>	IgG
<b>Purification</b>	Antigen affinity purification
<b>Conjugation</b>	Unconjugated
<b>Formulation</b>	PBS with 0.05% NaN <sub>3</sub> and 40% Glycerol,pH7.4

## Applications Recommended Dilution

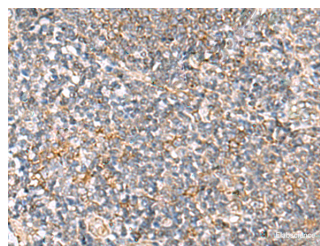
<b>WB</b>	1:500-1:2000
<b>IHC</b>	1:30-1:150
<b>ELISA</b>	1:5000-1:10000

## Data

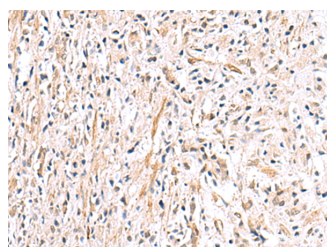


Western blot analysis of 293T cell lysate using HLA-DOB Polyclonal Antibody at dilution of 1:400

**Observed Mw:Refer to figures**  
**Calculated Mw:31 kDa**



Immunohistochemistry of paraffin-embedded Human tonsil tissue using HLA-DOB Polyclonal Antibody at dilution of 1:40(×200)



Immunohistochemistry of paraffin-embedded Human prostate cancer tissue using HLA-DOB Polyclonal Antibody at dilution of 1:40(×200)

## Preparation & Storage

**Storage** Store at -20°C. Avoid freeze / thaw cycles.

## Background

HLA-DOB belongs to the HLA class II beta chain paralogues. This class II molecule is a heterodimer consisting of an

## For Research Use Only

A Reliable Research Partner in Life Science and Medicine

Toll-free: 1-888-852-8623

Web: [www.elabscience.com](http://www.elabscience.com)

Tel: 1-832-243-6086

Email: [techsupport@elabscience.com](mailto:techsupport@elabscience.com)

Fax: 1-832-243-6017

# HLA-DOB Polyclonal Antibody

Catalog Number:E-AB-18081



alpha (DOA) and a beta chain (DOB), both anchored in the membrane. It is located in intracellular vesicles. DO suppresses peptide loading of MHC class II molecules by inhibiting HLA-DM. Class II molecules are expressed in antigen presenting cells (APC: B lymphocytes, dendritic cells, macrophages). The beta chain is approximately 26-28 kDa and its gene contains 6 exons. Exon one encodes the leader peptide, exons 2 and 3 encode the two extracellular domains, exon 4 encodes the transmembrane domain and exon 5 encodes the cytoplasmic tail. HLA-DOB (Major Histocompatibility Complex, Class II, DO Beta) is a Protein Coding gene. Among its related pathways are ICos-ICosL Pathway in T-Helper Cell and CTLA4 Signaling. GO annotations related to this gene include MHC class II protein complex binding and MHC class II receptor activity. An important paralog of this gene is HLA-DRB1.

---

## For Research Use Only

A Reliable Research Partner in Life Science and Medicine

Toll-free: 1-888-852-8623

Web: [www.elabscience.com](http://www.elabscience.com)

Tel: 1-832-243-6086

Email: [techsupport@elabscience.com](mailto:techsupport@elabscience.com)

Fax: 1-832-243-6017