

## SIX6 Polyclonal Antibody

**Catalog No.** E-AB-18090

*Note:* Centrifuge before opening to ensure complete recovery of vial contents.

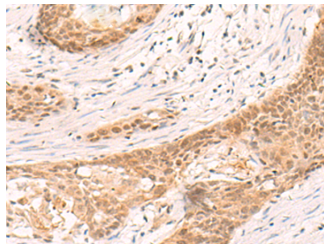
### Description

<b>Reactivity</b>	Human, Mouse
<b>Immunogen</b>	Synthetic peptide of human SIX6
<b>Host</b>	Rabbit
<b>Isotype</b>	IgG
<b>Purification</b>	Antigen affinity purification
<b>Conjugation</b>	Unconjugated
<b>Buffer</b>	PBS with 0.05% NaN <sub>3</sub> and 40% Glycerol, pH7.4

### Applications Recommended Dilution

<b>IHC</b>	1:30-1:150
<b>ELISA</b>	1:5000-1:10000

### Data



Immunohistochemistry of paraffin-embedded Human esophagus cancer tissue using SIX6 Polyclonal Antibody at dilution of 1:30(×200)

### Preparation & Storage

**Storage** Store at -20°C. Avoid freeze / thaw cycles.

### Background

The protein encoded by this gene is a homeobox protein that is similar to the *Drosophila* 'sine oculis' gene product. This gene is found in a cluster of related genes on chromosome 14 and is thought to be involved in eye development. Defects in this gene are a cause of isolated microphthalmia with cataract type 2 (MCOPCT2). SIX6 (SIX Homeobox 6) is a Protein Coding gene. Diseases associated with SIX6 include Optic Disc Anomalies With Retinal And/Or Macular Dystrophy and Six6-Related Eye Disorders. Among its related pathways are Ectoderm Differentiation. GO annotations related to this gene include transcriptional activator activity, RNA polymerase II distal enhancer sequence-specific binding. An important paralog of this gene is SIX3.

### For Research Use Only