

HTRA4 Polyclonal Antibody

Catalog No. E-AB-18098

Note: Centrifuge before opening to ensure complete recovery of vial contents.

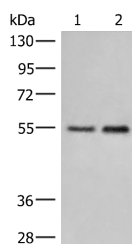
Description

Reactivity	Human, Rat
Immunogen	Synthetic peptide of human HTRA4
Host	Rabbit
Isotype	IgG
Purification	Antigen affinity purification
Conjugation	Unconjugated
Buffer	PBS with 0.05% NaN ₃ and 40% Glycerol, pH7.4

Applications Recommended Dilution

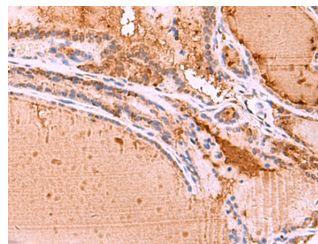
WB	1:500-1:2000
IHC	1:30-1:150

Data



Western blot analysis of Human placenta tissue and 231 cell lysates using HTRA4 Polyclonal Antibody at dilution of 1:400

Observed Mw: Refer to figures
Calculated Mw: 51 kDa



Immunohistochemistry of paraffin-embedded Human thyroid cancer tissue using HTRA4 Polyclonal Antibody at dilution of 1:35 (×200)

Preparation & Storage

Storage Store at -20°C. Avoid freeze / thaw cycles.

Background

This gene encodes a member of the HtrA family of proteases. The encoded protein contains a putative signal peptide, an insulin growth factor binding domain, a Kazal protease inhibitor domain, a conserved trypsin domain and a PDZ domain. Based on studies on other related family members, this enzyme may function as a secreted oligomeric chaperone protease to degrade misfolded secretory proteins. Other human HtrA proteins have been implicated in arthritis, tumor suppression, unfolded stress response, apoptosis, and aging.

For Research Use Only