

## IGFBPL1 Polyclonal Antibody

**Catalog No.** E-AB-18105

*Note:* Centrifuge before opening to ensure complete recovery of vial contents.

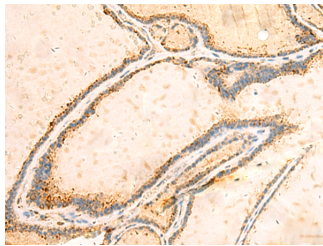
### Description

<b>Reactivity</b>	Human
<b>Immunogen</b>	Synthetic peptide of human IGFBPL1
<b>Host</b>	Rabbit
<b>Isotype</b>	IgG
<b>Purification</b>	Antigen affinity purification
<b>Conjugation</b>	Unconjugated
<b>Buffer</b>	PBS with 0.05% NaN <sub>3</sub> and 40% Glycerol, pH7.4

### Applications Recommended Dilution

<b>IHC</b>	1:50-1:300
------------	------------

### Data



Immunohistochemistry of paraffin-embedded Human thyroid cancer tissue using IGFBPL1 Polyclonal Antibody at dilution of 1:55(×200)

### Preparation & Storage

**Storage** Store at -20°C. Avoid freeze / thaw cycles.

### Background

IGFBPL1 (Insulin Like Growth Factor Binding Protein Like 1) is a Protein Coding gene. Diseases associated with IGFBPL1 include Umbilical Hernia. Gene Ontology (GO) annotations related to this gene include insulin-like growth factor binding. An important paralog of this gene is IGFBP7.

### For Research Use Only