

# IRX2 Polyclonal Antibody

Catalog Number:E-AB-18130

**Note:** Centrifuge before opening to ensure complete recovery of vial contents.

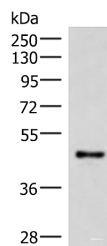
## Description

<b>Reactivity</b>	Human, Mouse
<b>Immunogen</b>	Synthetic peptide of human IRX2
<b>Host</b>	Rabbit
<b>Isotype</b>	IgG
<b>Purification</b>	Antigen affinity purification
<b>Conjugation</b>	Unconjugated
<b>Formulation</b>	PBS with 0.05% NaN <sub>3</sub> and 40% Glycerol,pH7.4

## Applications Recommended Dilution

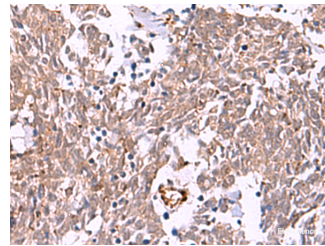
<b>WB</b>	1:500-1:2000
<b>IHC</b>	1:40-1:200
<b>ELISA</b>	1:5000-1:10000

## Data

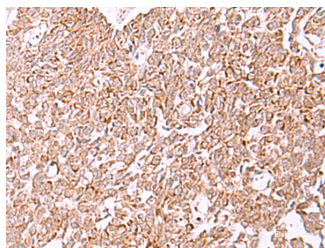


Western blot analysis of Mouse lung tissue lysate using IRX2 Polyclonal Antibody at dilution of 1:300

**Observed Mw:Refer to figures**  
**Calculated Mw:49 kDa**



Immunohistochemistry of paraffin-embedded Human lung cancer tissue using IRX2 Polyclonal Antibody at dilution of 1:45(×200)



Immunohistochemistry of paraffin-embedded Human ovarian cancer tissue using IRX2 Polyclonal Antibody at dilution of 1:45(×200)

## Preparation & Storage

**Storage** Store at -20°C. Avoid freeze / thaw cycles.

## Background

IRX2 is a member of the Iroquois homeobox gene family. Members of this family appear to play multiple roles during

## For Research Use Only

A Reliable Research Partner in Life Science and Medicine

Toll-free: 1-888-852-8623

Web: [www.elabscience.com](http://www.elabscience.com)

Tel: 1-832-243-6086

Email: [techsupport@elabscience.com](mailto:techsupport@elabscience.com)

Fax: 1-832-243-6017

# IRX2 Polyclonal Antibody

Catalog Number:E-AB-18130



pattern formation of vertebrate embryos. IRX2 (Iroquois Homeobox 2) is a Protein Coding gene. Diseases associated with IRX2 include Kidney Clear Cell Sarcoma. GO annotations related to this gene include sequence-specific DNA binding. An important paralog of this gene is IRX5.

---

## For Research Use Only

A Reliable Research Partner in Life Science and Medicine

Toll-free: 1-888-852-8623

Tel: 1-832-243-6086

Fax: 1-832-243-6017

Web: [www.elabscience.com](http://www.elabscience.com)

Email: [techsupport@elabscience.com](mailto:techsupport@elabscience.com)