

TRIM28(phospho-Ser824) Polyclonal Antibody

Catalog No. E-AB-18157

Note: Centrifuge before opening to ensure complete recovery of vial contents.

Description

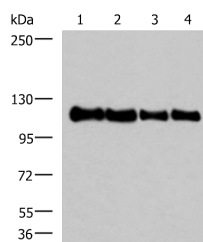
Reactivity	Human, Mouse, Rat
Immunogen	Synthetic peptide of human TRIM28(phospho-Ser824)
Host	Rabbit
Isotype	IgG
Purification	Antigen affinity purification
Conjugation	Unconjugated
Buffer	PBS with 0.05% NaN ₃ and 40% Glycerol,pH7.4

Applications

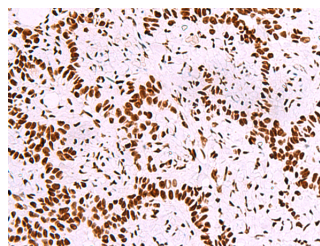
Recommended Dilution

WB 1:1000-1:5000,
IHC 1:50-1:300,
ELISA
1:5000-1:10000

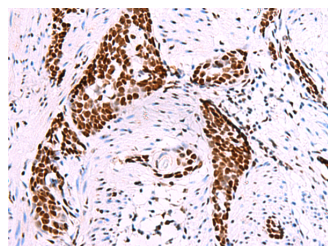
Data



Western blot analysis of 293T HEPG2 HeLa and TM4 cell lysates using TRIM28(phospho-Ser824) Polyclonal Antibody at dilution of 1:1000
Observed Mw:Refer to figures
Calculated Mw:89 kDa



Immunohistochemistry of paraffin-embedded Human ovarian cancer tissue using TRIM28(phospho-Ser824) Polyclonal Antibody at dilution of 1:50(×200)



Immunohistochemistry of paraffin-embedded Human esophagus cancer tissue using TRIM28(phospho-Ser824) Polyclonal Antibody at dilution of 1:50(×200)

For Research Use Only

Preparation & Storage

Storage Store at -20°C. Avoid freeze / thaw cycles.

Background

The protein encoded by this gene mediates transcriptional control by interaction with the Kruppel-associated box repression domain found in many transcription factors. The protein localizes to the nucleus and is thought to associate with specific chromatin regions. The protein is a member of the tripartite motif family. This tripartite motif includes three zinc-binding domains, a RING, a B-box type 1 and a B-box type 2, and a coiled-coil region.

For Research Use Only